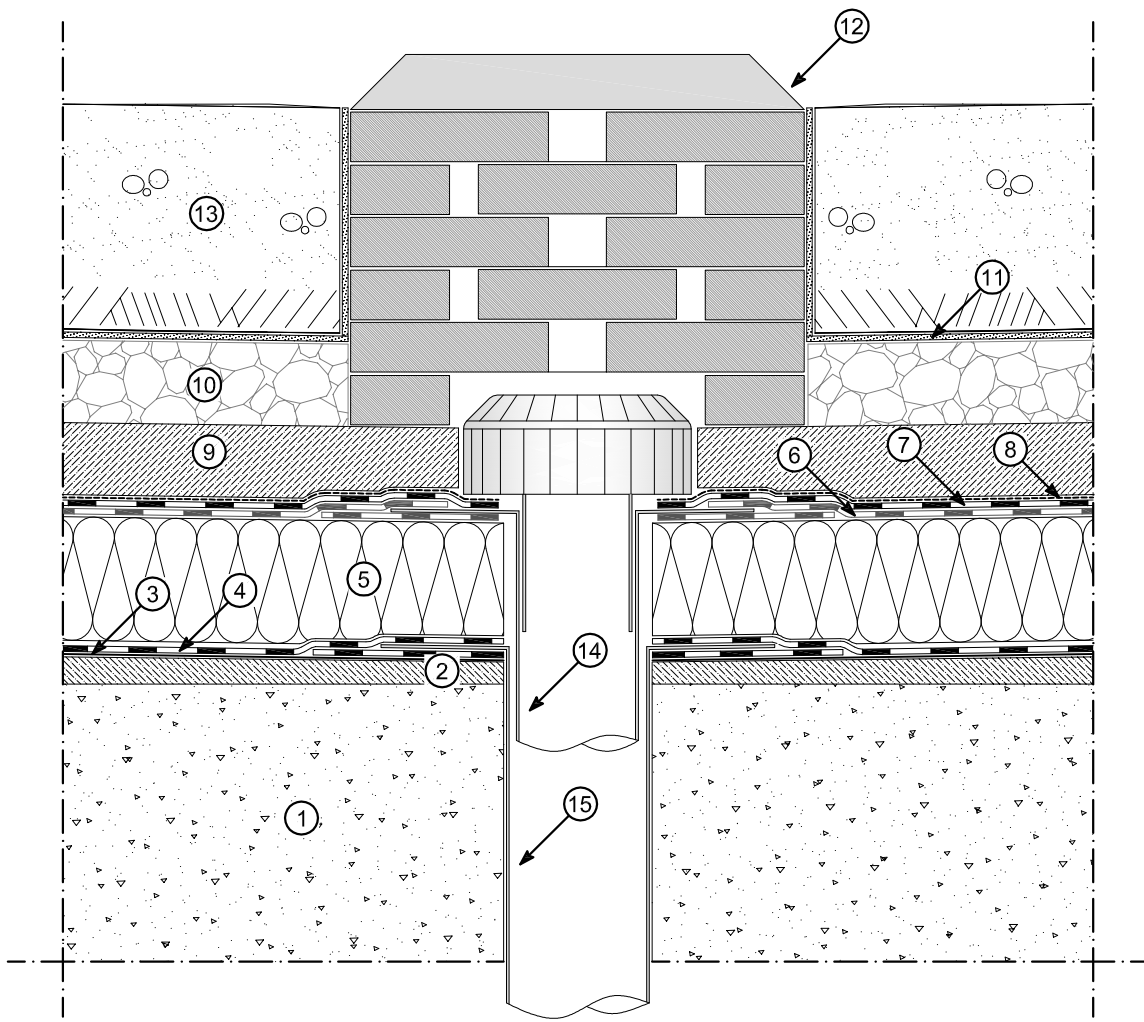


Drawing B-1015

Insulated roof garden

Drainage column detail



- | | |
|--|--|
| ① Structure | ⑨ Protective screed |
| ② Concrete gradient screed | ⑩ Gravel drainage layer |
| ③ Bituminous primer POLYPRIMER HP 45 PRO | ⑪ Non-woven drainage layer |
| ④ Vapour barrier | ⑫ Drainage column in bricks laid in honeycomb pattern, covered with non-woven fabric |
| ⑤ Insulation panel | ⑬ Soil |
| ⑥ Bituminous membrane (1st layer) | ⑭ Outlet in 20/10 lead for waterproofing membrane |
| ⑦ Bituminous membrane (2nd layer) | ⑮ Outlet in 8/10 stainless steel (vapour barrier) |
| ⑧ Double separation layer | |

05.03.2012

reproduction prohibited
 without cite the source