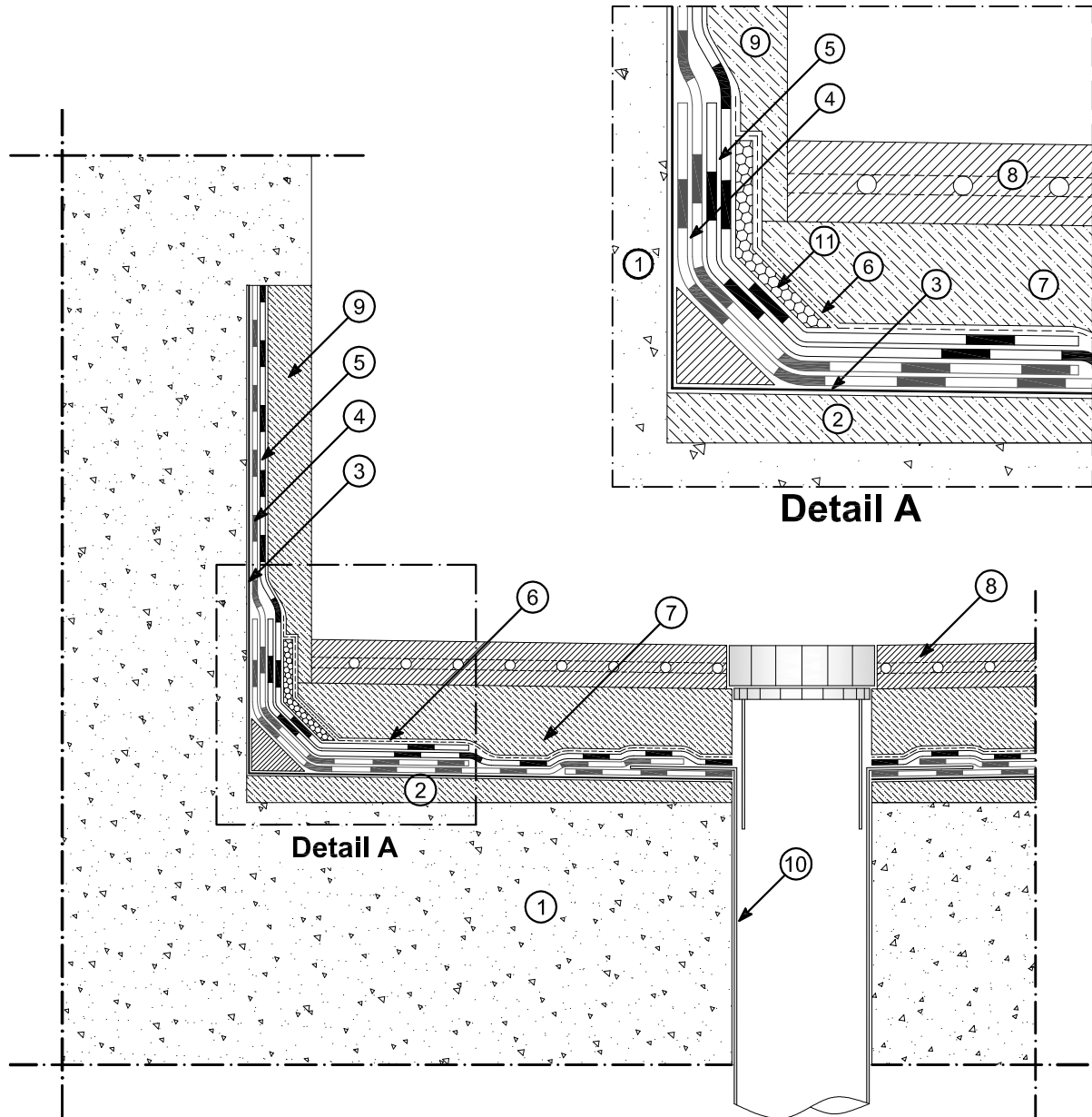


# Drawing B-1003

## Non-insulated roofing with industrial floor



- |  |  |
|--|--|
| ① Structure                              | ⑦ Protective screed                                  |
| ② Concrete gradient screed               | ⑧ Industrial floor                                   |
| ③ Bituminous primer POLYPRIMER HP 45 PRO | ⑨ Vertical turn-up protected with screen and plaster |
| ④ Waterproofing membrane (1st layer)     | ⑩ Outlet in 20/10 lead                               |
| ⑤ Waterproofing membrane (2nd layer)     | ⑪ Shock absorber                                     |
| ⑥ Double separation layer                |  |

05.03.2012

reproduction prohibited  
without cite the source